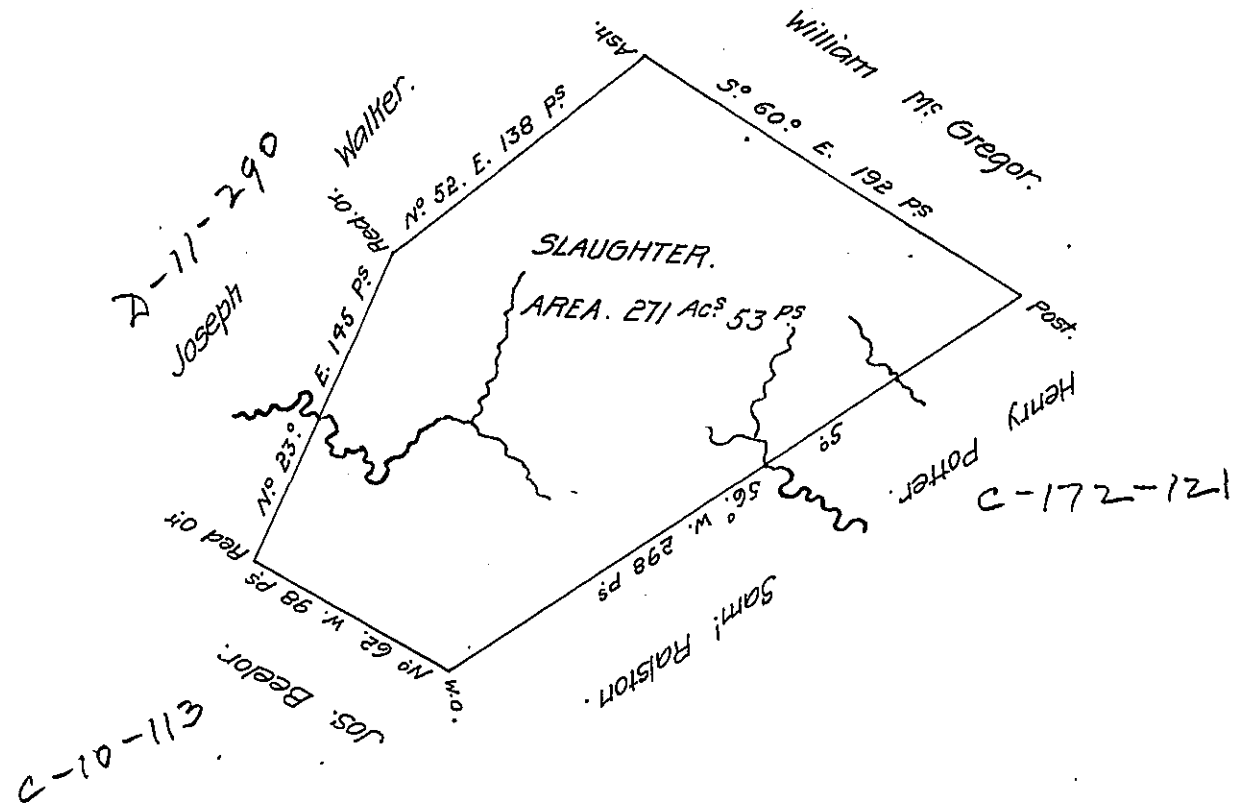


Not patd 35
 3-159.
 SWD 13-131



A Draught of a Survey lying on Robinson's Run in Washington County contg 271 Ac. 53 & 53 Ps without any Allow^{ce} executed Augst 25th 1785 in Pursuance of a Certificate granted Lewis Cloch disc^d for 400 Ac. 5 by the Commiss^{rs} appointed by Virg^a to adjust the Titles to unpatented Lands in the Counties of Montongalia, York^a & Ohio, and regularly entered with the County Surveyor as appears from the Authenticated List of Entries transmitted from the Office of y^e Surveyor Gen^l.

	Presley Nevill	} D. Su ^r
Jm ^o Lutens Esq ^e		
S. Gen ^l	Matt ^y Fitchie	

Note. The patent is to issue in the Name of the only Child of Lewis Cloch disc^d

IN TESTIMONY that the above is a copy of the original remaining on file in the Department of Internal Affairs of Pennsylvania, made conformably to an Act of Assembly approved the 16th day of February, 1833, I have hereunto set my Hand and caused the Seal of said Department to be affixed at Harrisburg, this twentieth day of March 1908.

Henry Horck
 Secretary of Internal Affairs.